

nobi

Nobi Pendant Light 2.0
Installation & onboarding manual



Thank you for choosing **Nobi**

This document provides the key information you need for a smooth installation of the **Nobi Pendant Light 2.0**.

For onboarding explanations, visit:



Table of contents

Preparation	3
Safety precautions	4
Pre-installation	5
Mounting the Nobi Power	6
Attaching the Nobi Light	7
Onboarding the Nobi Light	8
Warnings	10

Contact Nobi



General questions

Take a look at our frequently asked questions and answers:
nobi.life/frequently-asked-questions



Support

For technical support during installation, contact Nobi Support: support@nobi.life

Preparation

Contents:

- Nobi Pendant Light
- Nobi Power
- Nobi Power Cover
- 4 cable adjusters
- Ceiling adapter
- 4 steel suspension cables
- 4 mounting clips for the suspension cables
- 4 metric screws



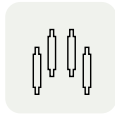
Nobi
Pendant Light



Nobi
Power



Nobi Power
Cover



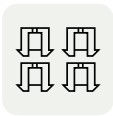
4 cable
adjusters



Ceiling
Adapter



4 suspension
cables



4 mounting
clips



4 Metric
screws

Required tools (not included):

- Multimeter
- Pencil
- Hammer
- Screwdriver
- Power drill
- Cable cutter
- Ladder
- Spirit level
- If there is no ceiling box or ceiling adapter, use appropriate plugs and screws suitable for the ceiling material:
 - 4 plugs (3/16")
 - 4 screws (M4)
- Mobile device (for onboarding purposes)

Estimated time:

- Installing the Nobi Pendant Light — 45 minutes
- Onboarding — 5 minutes

Before you begin:

- **Read all safety precautions** before starting the installation.
- The use of this manual is **restricted to Nobi Customer Services, authorized Nobi resellers, and technically trained individuals** who have received official Nobi installation training.
- Always onboard the Nobi Pendant Light or Nobi Ceiling Light before the Nobita Light.
- Install a Nobi switch to control the Nobi Light. This will add 10 minutes to the installation time.

Safety precautions

Read the following safety precautions carefully before installing the Nobi Pendant Light 2.0



- Take care when installing the Nobi Pendant as there is a risk of electric shock.
- This product must be installed in accordance with the applicable installation code by a person familiar with the construction and operation of the product and the hazards involved.
- The Nobi Pendant must be installed in an electrical circuit that contains a fuse with a minimum contact separation of 1/10" (3 mm).
- Do not install the Nobi Pendant in a closet.
- Do not install the Nobi Pendant in a bathroom or restroom.
- The Nobi Pendant is designed for indoor use only.
- The Nobi Pendant must be mounted on the ceiling.
- The light source in this luminaire should only be replaced by the manufacturer, its service agent or a similarly qualified person.
- Install the Nobi Pendant out of arm's reach.
- Once installed, it is not intended that an ordinary person or children comes into physical contact with the equipment.

Installing the Nobi Light



Pre-installation

- 1** **Locate the main fuse box and switch off the electrical power.**
To cut off power to individual rooms or circuits, switch the branch fuse to the OFF position.

Use a multimeter (or a known connected switch) to **verify** that the **power is fully disconnected**.
- 2** **Remove the current light fixture (if present), exposing 3 electrical wires:** ground (green or bare), neutral (white), and switched hot (black). Make sure you can identify each wire correctly. The colors may vary by country or local regulations. Tape or cap any unused ground wires.

Notice: The switched line needs to be bridged to the live line behind the switch that controls the lighting point where the Nobi Light will be installed, so that this point has constant 120V. The switched line on the ceiling now becomes a live line.

- 3** **Take the Nobi Power out of the box.**

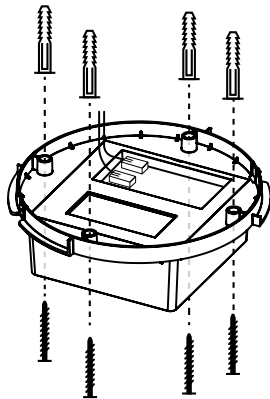
Mounting the Nobi Power

4 → If a **CEILING BOX (US)** is **PRESENT** or an existing light is replaced: **Connect the ceiling adapter to the ceiling box** using the 2 screws provided with the ceiling box.

→ If **NO CEILING BOX** is **PRESENT**, or if you are installing a new light: Hold the Nobi Power against the ceiling and **mark the 4 drill holes** with a pencil.

Drill the holes to the appropriate depth using a 15/64" drill bit at the marked points.

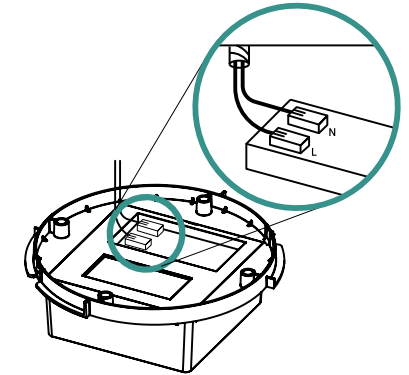
Carefully **tap the plugs** into the drilled holes.



Precise marking is critical to the accuracy and ease of the subsequent steps.

5 Hold the Nobi Power against the ceiling near the outgoing electrical wires.

6 **Connect the electrical wires** to the Nobi Power by using the 2 connectors. Connect the switched hot (black) wire and the neutral wire (white) to the appropriate wires on the Nobi Power. Do not connect them to the same connector. The ground wire (green or bare) should not be connected. Tape or cap any unused ground wires.



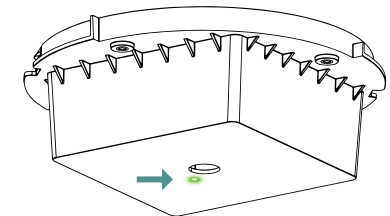
7 **Mount the Nobi Power with the four screws.**

→ If a **CEILING BOX (US)** is **PRESENT** or an existing light is replaced: Use the 4 included metric screws.

→ If **NO CEILING BOX** is **PRESENT** or a new light is placed: Use 4 screws that are applicable to the ceiling material being used.

Tighten the screws, ensuring the Nobi Power is firmly fixed to the ceiling. Use all 4 screws for a sturdy installation.

8 **Switch the fuse back on.** A small green light on the Nobi Power will illuminate.

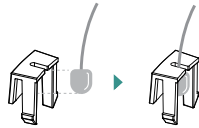


Attaching the Nobi Light

9 Place the light on a flat surface.

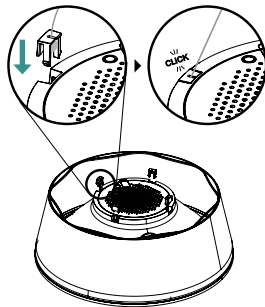
10 Unwind the four steel suspension cables one by one.

11 Insert each cable into a mounting clip.

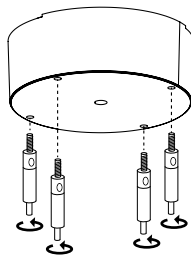


12 Verify that the length of the steel suspension cables is adequate for the room's height. Once connected, the mounting clips cannot be removed.

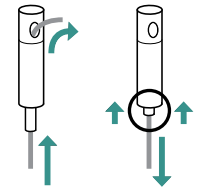
13 Click each mounting clip into the Nobi Light. Tug on the suspension cables to make sure everything is secure. Lay the cables over the edge of the light for convenience.



14 Attach the cable adjusters to the Nobi Power Cover.

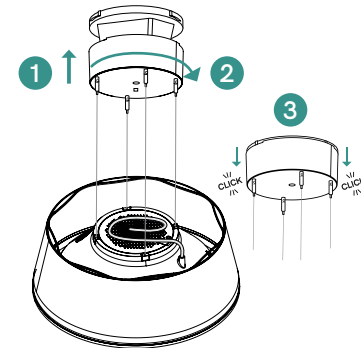


15 Insert each steel suspension cable into one of the four cable adjusters of the Nobi Power Cover.



16 Determine the desired height of the Nobi Light by adjusting the length of the cables by pressing the pin of the cable adjuster.

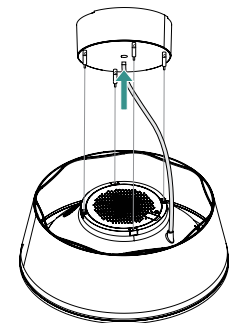
17 Position the Nobi Power Cover over the Nobi Power⁽¹⁾ and turn it 90° to the right⁽²⁾ and gently pull down.⁽³⁾



18 Verify that the Nobi Light is level using a spirit level. If adjustments are needed, modify the length of the suspension cables by pushing them up or lowering them by pressing the pin on a cable adjuster.

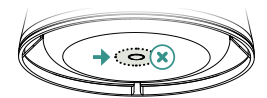
19 Cut off any excess cable length, once the Nobi Light is level and at the correct height.

20 Connect the power cable from the light to the Nobi Power using the magnetic connector.



21 The light will first flicker white and then flash blue.

22 Remove the protective plastic on the underside of the Nobi Light. You are ready to start onboarding.

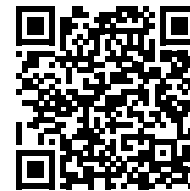
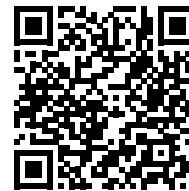


Onboarding the Nobi Light

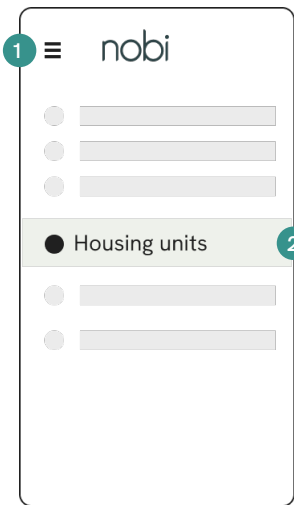


Before you begin the onboarding process:

1. **Contact your local distributor or Nobi** before starting the onboarding process, as your account must be created by them first.
2. **Download** the app:

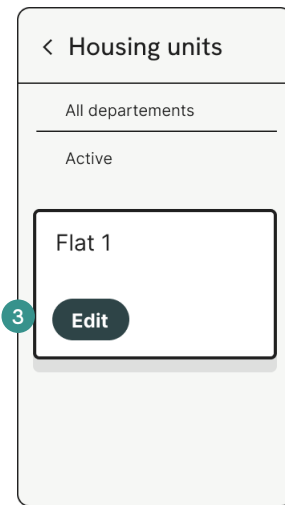


Onboarding the Nobi Light

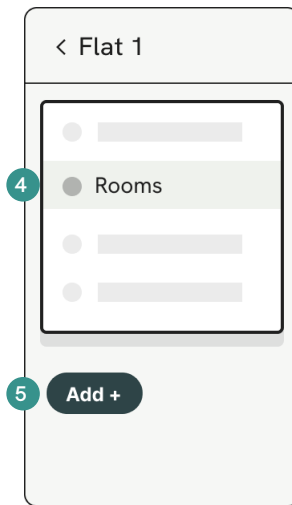


1 Open the **navigation menu** by clicking on the 3 lines in the top-left corner.

2 Go to **Housing units** in the navigation menu.

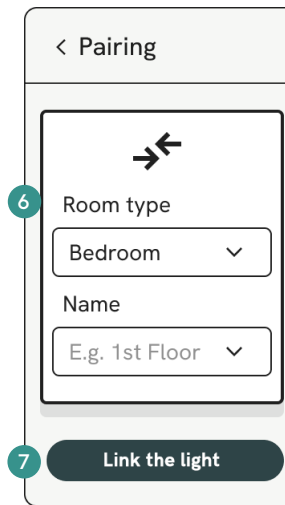


3 Click on the **Edit** button for the housing unit in which you installed the Nobi Light.



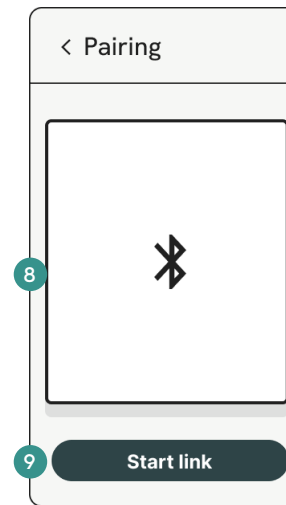
4 Select the **Rooms** tab.

5 Click on the **Add +** button.



6 Select the **type of room**, for example bedroom or living room. Name the room if more than one identical type of room is used.

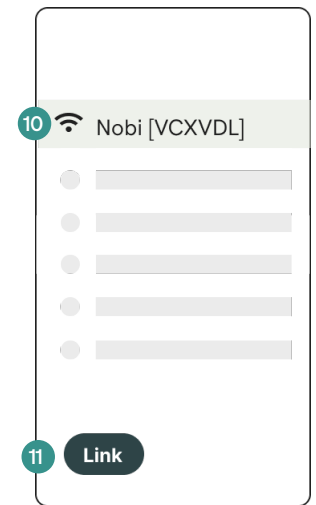
7 To proceed click on the **Link the light** button.



8 Make sure that:

- **Bluetooth** is enabled on your mobile device;
- that you are in the same room as the Nobi Light;
- and that the Nobi Light is flashing blue.

9 If all the above are met, click on the **Start link** button.



10 Choose the correct **Nobi Light** from the list of available Nobi lights, based on the secure code shown on the sticker of the Nobi Light. This code consists of six characters.

11 Click on the **Link** button. **The pairing process will start automatically.** At the end, you will receive confirmation that the light is successfully paired.



After the onboarding:

An update may occur; its duration depends on your WiFi network's capacity. This update occurs in the background and may impact the availability of new features.

Warnings for the Nobi Light

Symbols

	Consult manual before use		Do not stare at the light source		FCC marking		Recycling
	Caution, risk of electric shock		Ceiling mount use only		CE marking		Warning sign
	Class II		Emits IR light		UK Conformity Assessed		Read manual before use
	Class III		Indoor use only		Location of manufacturing		DC polarity
		Caution is needed when installing and using this device; consult the manual before use					

Environmental conditions

- Operating temperature: 50°F to 104°F
- Operating humidity: 15% to 95% RH (non-condensing)
- Atmospheric pressure: 9.6 to 15.4 psi and maximum 6560 ft altitude

Technical specifications

Nobi Pendant Light 2.0

Input

- 24 V DC
- max 0,75 A
- max 18W

Nobi Power

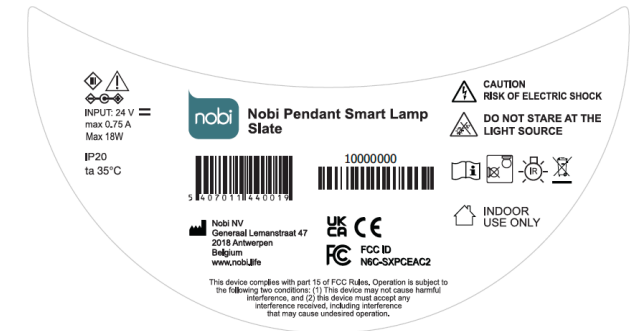
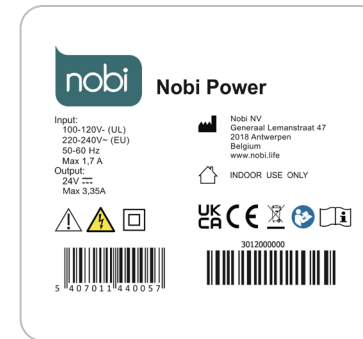
Input

- 100-120 V AC (UL)
- 220-240 V AC (EU)
- 50/60 Hz
- Max 1.7 A

Output

- 24 V DC
- Max 3,35 A

Labels



Disposal message

Your product is designed and manufactured with high-quality materials and components, which can be recycled and reused. Please find out for yourself about the local separate collection system for electrical and electronic products. Please act according to your local rules and do not dispose of your old product with your normal household waste. The correct disposal of your old product will help prevent potential negative consequences for the environment and human health.