



The Nobi Ceiling Light is an AI-powered, ceiling-mounted device purpose-built to safeguard older adults and people with physical or cognitive impairments. More than just a light, she functions as a proactive care system offering 24/7 monitoring, fall detection, emergency alerts, and preventive insights, all in one sleek unit.

Product name	Nobi Ceiling Light 2.0	
Model number (SKU)	■ 144003	Desert PANTONE 13-4403 TPG
	■ 144004	Slate PANTONE 18-0201 TPG

User experience

Environment Indoor dry location (living room, bedroom...)

Install instructions

Scan this QR code for step by step instructions

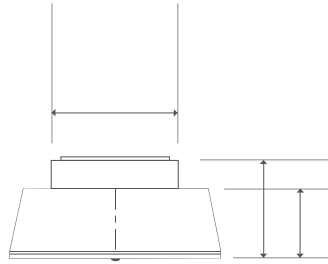


Physical characteristics

Weight	Nobi Ceiling Light 2.0: 5.62 lbs / 2,55 kg Nobi Power 2.1: 0.88 lbs / 0,4 kg
IP rating	IP20
Operating temperature	50 °F to 104 °F / 10 °C to 40 °C

Dimensions

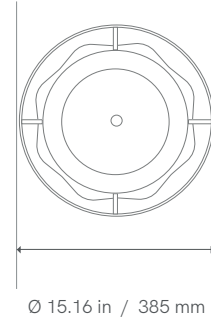
(Coverage area: 26 ft / 7,9 m)



Ceiling adapter (optional):
h 0.41 in / 10,5 mm
Ø 6,63 in / 168,4 mm

Ø 8,9 in / 226 mm
h 7,55 in / 191,7 mm

h 5.39 in / 136,8 mm



Ø 15.16 in / 385 mm

Light specifications

Color temperature LED light
(2750 - 6600 K)

Brightness 984,4 lm

Technical specifications

Operating voltage 100/240 V AC (50/60 Hz)

Power consumption Standby: 17 W
Normal: 40 W

Maximum Load Nobi Power 2.1: 80 W

Connectivity & compatibility

Bluetooth BLE 5.0

WIFI 802.11 a/b/g/n/ac

Compatibility iOS and Android

Order information

Content Nobi Ceiling Light 2.0

Nobi Power 2.1
Ceiling adapter
4 metric screws

EAN code Desert: 5407011440033
Slate: 5407011440040

Contact Nobi USA Inc.
820 Gessner Road
Suite 120, Houston
TX 77024, US

Nobi NV
Generaal Lemanstraat 47
2018 Antwerp, BE

Environment & safety

Warranty 2 years

Certifications  FCC ID
N6C-SXPCEAC2

 R-41268240 

Recycling 