



The Nobi Ceiling Light is an AI-powered, ceiling-mounted device purpose-built to safeguard older adults and people with physical or cognitive impairments. More than just a light, she functions as a proactive care system offering 24/7 monitoring, fall detection, emergency alerts, and preventive insights, all in one sleek unit.

**Product name** Nobi Ceiling Light 2.1

**Model number (SKU)** 144016

## User experience

**Environment** Indoor dry location (living room, bedroom...)

**Install instructions**

Scan this QR code for step by step instructions



## Physical characteristics

**Weight** Nobi Ceiling Light 2.1: 9.04 lbs / 4,1 kg  
Nobi Power 2.1: 0.88 lbs / 0,4 kg

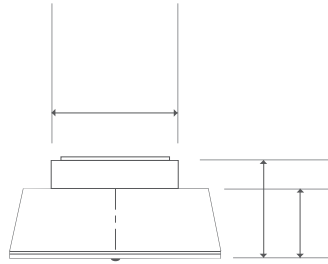
**Color**  Desert PANTONE 13-4403 TPG

**IP rating** IP20

**Operating temperature** 50 °F to 104 °F / 10 °C to 40 °C

## Dimensions

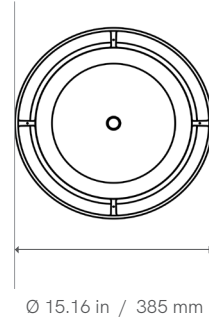
(Coverage area: 26 ft / 7,9 m)



Ceiling adapter (optional):  
h 0.41 in / 10,5 mm  
Ø 6,63 in / 168,4 mm

Ø 8,9 in / 226 mm  
h 7,55 in / 191,7 mm

h 5.39 in / 136,8 mm

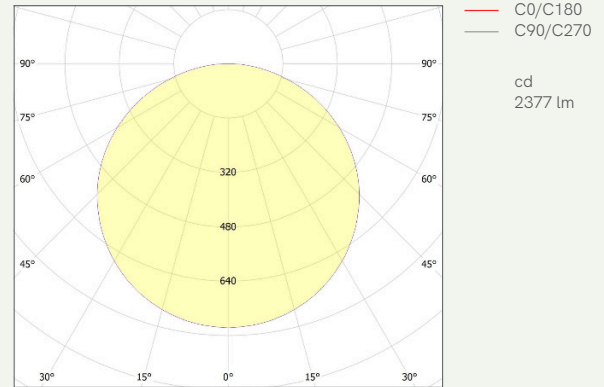


Ø 15.16 in / 385 mm

## Light specifications

Color temperature	LED light (2700 - 6500 K)
Brightness	2,377 lm
Luminous efficacy	68.1 lm/W
Color rendering index	96

## Luminous intensity distribution



## Technical specifications

Operating voltage	100/240 V AC (50/60 Hz)
Power consumption	Standby: 18 W Normal: 52 W
Maximum Load	Nobi Power 2.1: 80 W

## Order information

Content	Box A	Nobi Ceiling Light 2.1
	Box B	Nobi Power 2.1 Ceiling adapter 4 metric screws

## Connectivity & compatibility

Bluetooth	BLE 5.0
WIFI	802.11 a/b/g/n/ac
Compatibility	iOS and Android

EAN code 5407011440163

Contact  
Nobi USA Inc.  
820 Gessner Road  
Suite 120, Houston  
TX 77024, US  
  
Nobi NV  
Generaal Lemanstraat 47  
2018 Antwerp, BE

## Environment & safety

Warranty 2 years

Certifications  FCC ID N6C-SXPCEAC2

 R-41268240  

Recycling 