



# Nobi Pull Cord Installation & Onboarding Manual



# Thank you for choosing **Nobi**

This document provides the key information you need for a smooth installation of the **Nobi Pull Cord**.

For step-by-step onboarding guidance, visit:  
<https://tinyurl.com/3tmjmyb>



## Table of contents

Preparation .....	3
Mounting the Nobi Pull Cord .....	3
Onboarding the Nobi Pull Cord .....	4
Warnings .....	5

### Contact Nobi



#### General questions

Take a look at our frequently asked questions and answers:  
[nobi.life/frequently-asked-questions](https://nobi.life/frequently-asked-questions)



#### Support

For technical support during installation, contact Nobi Support: [support@nobi.life](mailto:support@nobi.life)

# Preparation

## Contents:

### BOX

- Pull Cord button
- Cord (9.84 ft / 3 m)
- Red Weight
- 2 pieces of self-adhesive tape



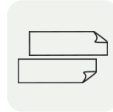
Pull Cord Button



Cord  
(9.84 ft / 3 m)



Red Weight



2 pieces of self-adhesive tape

### Required tools (not included):

- Pencil
- Screwdriver (optional)
- Power drill (optional)
- Spirit level
- If screws are required, select ones appropriate for the wall material
  - 2 screws

### Estimated time:

- Installing the Nobi Pull Cord  
— 10 minutes

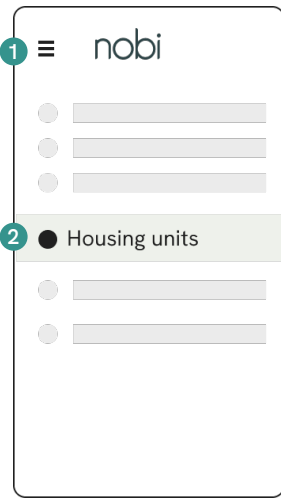
# Mounting the Nobi Pull Cord

## Before you begin:

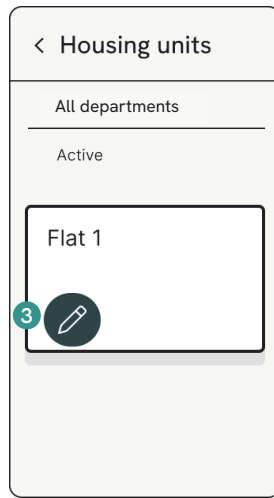
Please make sure a Nobi Light is installed and configured before starting the onboarding of this Nobi Pull Cord.

- 1** **Locate the ideal position** for the Nobi Pull Cord. Make sure it is easily accessible to residents.
- 2** **If needed, remove the weight**, cut off a part of the cord, and **attach the weight to the cord again**.
- 3** **Remove the protective backing from the self-adhesive tape** and **position the Pull Cord on the wall**. Make sure the Nobi Pull Cord is **firmly attached** to the wall.

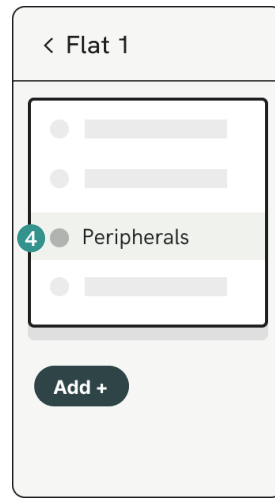
# Onboarding the Nobi Pull Cord



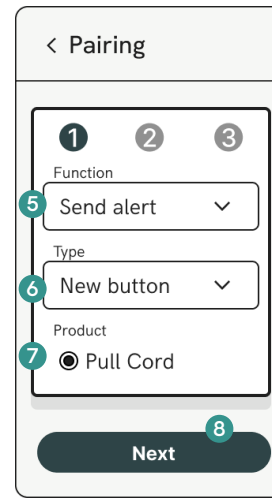
- 1 Open the **navigation menu** by clicking on the 3 lines in the top-left corner.
- 2 Go to **Housing units** in the navigation menu.



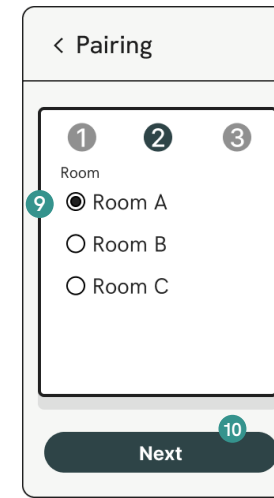
- 3 Click on the **Edit** button for the housing unit in which you installed the Nobi Pull Cord.



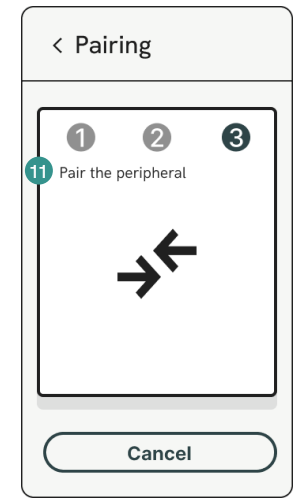
- 4 Select the **Peripherals** tab and click on the **Add +** button.  
  
A wizard will open and guide you through the steps.



- 5 To pair the Nobi Pull Cord, set the function to **Send alert**.
- 6 For the peripheral type, choose **New button**.
- 7 You can then select the product you installed. In this case, select **Nobi Pull Cord** (Self powered).
- 8 Click **Next** to proceed to the next step.



- 9 **Select the room with the Nobi light** this peripheral will be paired to.  
  
The light in this room will flash.
- 10 Click **Next** to proceed to the next step.



- 11 Instructions to pair the peripheral will be provided. **Follow the instructions on the screen.**  
  
When pairing is successful, you will return to the peripherals tab with the new peripheral added to the view.  
  
At the top of the screen, Nobi will display that the pairing is successfully completed.

# Warnings

## Environmental conditions

- Maximum transmission power: +4 dBm
- Transmission Range: 49.2 ft / 15 m indoors
- Operating temperature: -25 °C to 65 °C

## Certifications

- CE, Red (Europe)
- FCC (US)  
(ID:SZV-PTM215BZ)
- ISED (Canada)
- ARIB (Japan)
- ACMA (Australia)

## Disposal message

Your product is designed and manufactured with high-quality materials and components, which can be recycled and reused. Please check your local regulations regarding the separate collection of electrical and electronic products. Please act according to your local rules and do not dispose of your old product with your normal household waste. The correct disposal of your old product will help prevent potential negative consequences for the environment and human health.